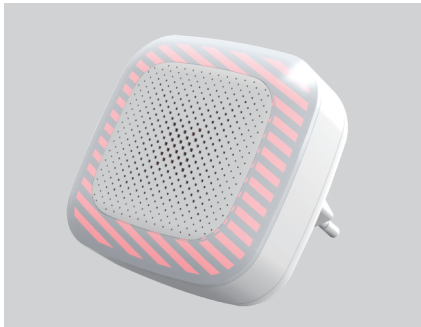


Indoor Wireless Acousto-optic Siren User's Manual



1. Brief Introduction

The indoor wireless acousto-optic siren adopts 8 bit MCU technology, built-in 16 two-color LED lights and 1 high-decibel buzzers. The indoor wireless acousto-optic siren not only can connect with the alarm host via wireless transmission, but also can be used as an alarm host and a repeater. It is widely used in banks, shops and villas etc. There are a high-decibel sound output and highlight flashes when a signal is triggered, causing the intruder to flee the scene in a panic, strengthening alarm deterrence and improving the Safety of the Protection Environment.

When the indoor wireless acousto-optic siren works with wireless alarm host by wireless transmission, alarm host can input the indoor wireless acousto-optic siren address, or directly learning with the indoor wireless acousto-optic siren. The indoor wireless acousto-optic siren also can indicate alarm host arm / disarm status.

Users can buy the relative remote controllers and detectors according to their demands when the indoor wireless acousto-optic siren is used as the alarm host. It can connect with these wireless accessories and become a powerful independent alarm system.

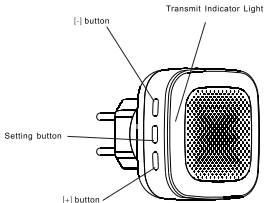
The indoor wireless acousto-optic siren can also be used as a repeater, adopting storage mode to automatically enroll the retransmitted detectors. As a short-range wireless transmission relay and relay emitter, wireless transmission distance is effectively increased.

2.Main Features

- ◆ Used as a repeater, it can transmit 32 wireless accessories.
- ◆ 3 colors of indicator lights flashing modes.
- ◆ Acousto-optic notice when operating Arm /Disarm.
- ◆ Support 8 remote controls, 32 detectors.
- ◆ Adjustable light brightness on standby status.
- ◆ A strong deterrence with loudness alarm sound and dazzling warning lights.

3.Interface Definition

Transmit Indicator Light, Setting button,[+] button, [-] button



4.Operation Instruction

4.1.Standby Prompt

Under standby status, short press 'setting' button 2 times to open/close standby light prompt function.

When open standby light prompt function, users can adjust light brightness by [+] and [-] button.

4.2.Enrollment

When alarm host enters learning wireless siren, short press 'setting' button on the siren 3 times, it will emit wireless enrollment information

to the alarm host. The alarm host will prompt success if the enrollment is successful.

4.3. Alarm Elimination

In the alarm status, short press 'setting', [+] or [-] button, the alarm voice will stop.

4.4. Restore Factory Default

Under standby status, long press [+] and [-] button at the same time until hearing 2 short 'Di'. It means that the siren has been restored to factory default.

4.5. Replicate Siren Address

5.1 Copy the wireless siren address

In standby status press "[-]and [set]" buttons for 3 seconds, hear the one short "Di", enter the copy wireless siren address status, and all indicator lights of siren are on. If the indicator is flashing, it means the factory address. Then trigger the siren which you wanted to copy. If the copy is successful, siren will prompt one short "Di", while the siren indicator will stop to flash into a long light, suggesting that the transponder replication is successful. If the indicator is long light, it means the current address of siren has been copied, the user must delete first and then you can re-copy.

5.2 Delete the copy siren address

Press the "[-]or[+]" button for 3 seconds, until hear 2 short "Di"while the alarm indicator will start to flash instead of long light. It means the

deleted successfully.

6.3 Exit Detector Enrollment

In siren copy status, short press “SET” button once to exit settings.

5.Operation Instruction

5.1. Remote Control

5.1.1Enroll Remote Control

Under the normal status without alarm event, long press “SET” button for 3s until heard a short “Di” and 1st group of red indicator light bright , it means the siren is in enrolling status, then user can start to enroll remote control.

If user wants to enroll the next remote control, please press “-/ +” button to the previous/next one.

If the red indicator light is flashing, it means the current remote control has not been enrolled and user can press any button of remote control to enroll. If enrollment succeeded, the siren will prompt a short “Di”, meanwhile red indicator light will turn into long bright, it means remote control enrollment succeed. If the red indicator light is long bright, it means the current address has been already enrolled. User should delete previous one to re-enrolling.

Noted: If heard 5 short “Di”, it means the remote control has already been enrolled.

5.1.2 Delete Remote Control

In remote control enrolling status, long press “-/+” button for 3s to delete the existing remote control. After user heard 2 short “Di” from siren and the indicator turned into flashing, deletion is successful.

5.1.3 Exit The Remote Control Code

In remote control enrolling status, short press “SET” button 6 times to exit settings.

5.2. Detector

5.2.1 Enroll Detector

Under remote control enrolling status, short press “SET” button once, 1st group of blue indicator light bright, it means the siren is in enrolling status, then user can start to enroll detectors.

If user wants to enroll the previous/next detector, please short press “-/+” button.

If the current blue indicator light is flashing, it means the current detector has not yet been enrolled and user can enable detector to transmit alarm signal to be enrolled. If enrollment succeeded, siren will prompt a short “Di”, meanwhile blue indicator light will turn into long bright, it means successful enrollment of detector. If the current blue indicator light is long bright, it means the current detector has been already enrolled. User should delete previous one before re-enrolling.

Noted: If heard 5 short “Di”, it means the detector has already been enrolled.

5.2.2 Delete Detector

In detector enrolling status, press “-/+” button for 3s to delete the existing detector. After user heard 2 short “Di” and the blue indicator light turn into flashing, deletion is successful.

5.2.3 Exit Detector Enrollment

In detector enrolling status, short press “SET” button 5 times to exit settings.

5.3 Repeater

5.3.1 Enroll Repeater

Under detector enrolling status, after hearing a short “Di”, the siren enters the detector enrollment and meanwhile the 1st group of violet indicator light bright.

If user wants to enroll the previous/next one, please short press “-/+” button.

If the current indicator light is flashing, it means the current repeater has not yet been enrolled and user can trigger the detector. If enrollment succeeded, siren will prompt a short “Di”, meanwhile violet indicator light will turn into long bright, it means successful enrollment of repeater. If the violet indicator light is long bright, it means the current repeater has been already enrolled. User should delete previous one before re-enrolling.

Noted: If heard 5 short “Di”, it means the repeater has already been enrolled.

5.3.2 Delete Repeater

In repeater enrolling status, long press “[-]or[+]” button for 3s to delete the existing repeater. After user heard 2 short “Di” and the violet indicator light turned into flashing, deletion is successful.

5.3.3 Exit Repeater Enrollment

In repeater enrolling status, short press “SET” button 4 times to exit settings.

5.4 Repeater Switch

Enter repeater enroll status, short press “SET” button for once, after that hearing a short “DI”, siren enter repeater switch setting status, and 2nd group of red light turn on. Short press [+] or [-] button to switch on and off. Flashing light means turn off, long bright light means turn on.

Under repeater switch setting status, short press “SET” button 3 times, to exit settings.

5.5 Alarm Time

Enter repeater switch setting status, short press “SET” button once, hear a short “DI”, hereto siren enter alarm time setting, and 2nd group of blue light turn on. Short press [+] or [-] button to set alarm time. Flashing light means alarming time is 30S, long bright light means alarm time is 3Min.

Under alarm time setting status, short press “SET” button 2 times, to exit settings.

5.6 Alarm Light

Enter alarm time setting status, short press “SET” button once, hear a short “DI”, hereto siren enter alarm light setting, and all indicator lights turn on. Short press [+] or [-] button to set alarm light color.

Under alarm light setting status, short press “SET” button once, to exit settings.

6. Technical Parameter

Working Voltage: 100-240VAC

Standby Current: < 50mA

Alarm Current: < 150mA

Alarm Sound: >100dB

Wireless Frequency: 433.92MHz

Use Environment: Working Temperature: -20°C ~ +55°C;

Relative Humidity: 40 ~ 80%